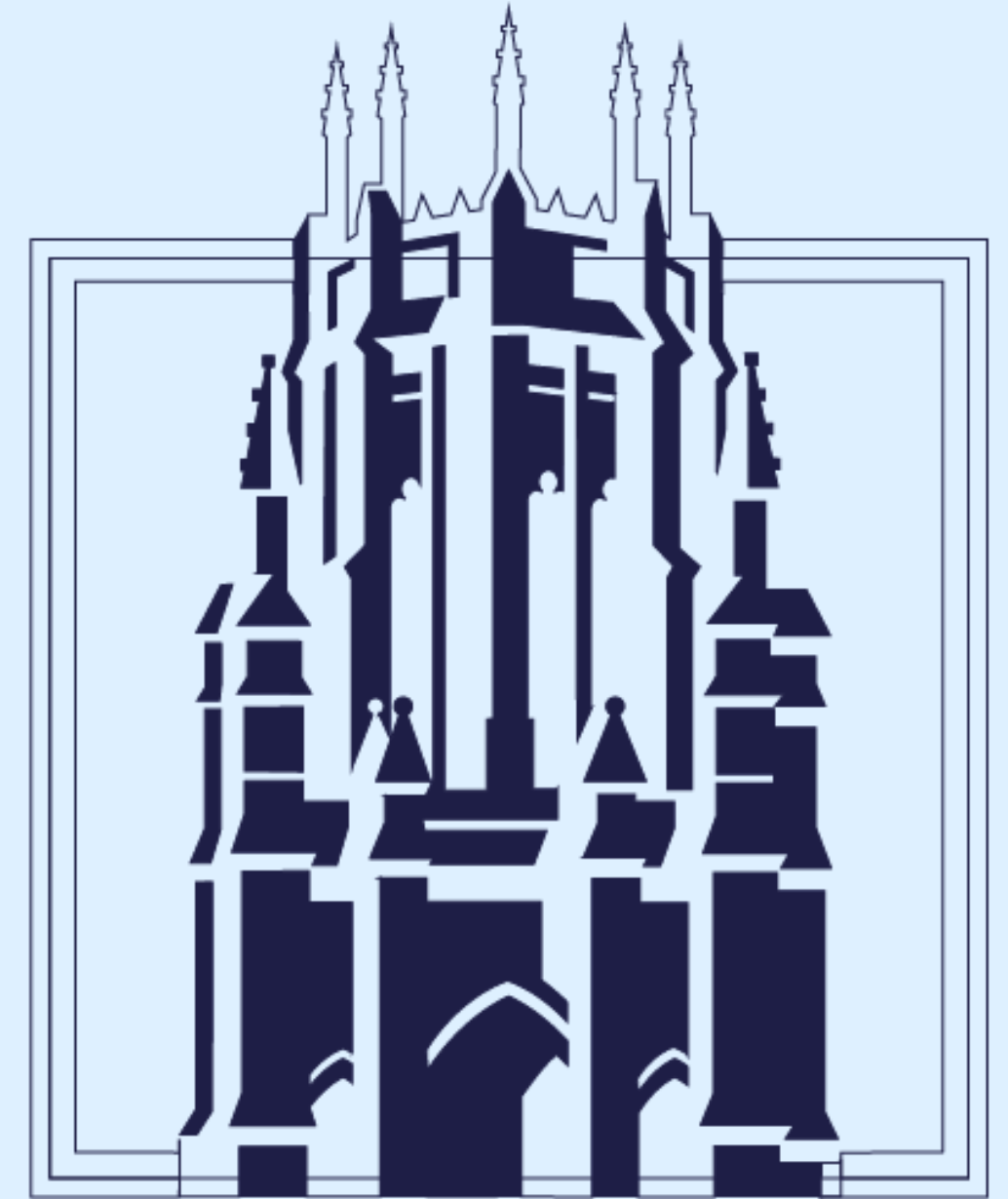


MARQUETTE UNIVERSITY

SERVICE LEARNING PROGRAM



**BE THE
DIFFERENCE.**

What is service learning?

Service learning allows students to engage with community-based organizations that directly relate to their academic coursework, creating a space for students to integrate classroom knowledge with practical experience to grow both their understanding and application of their course

Where do you participate in service learning?

Service learning can take place in various settings, including local communities, nonprofit organizations, schools, and other community-based agencies. We partner with a range of community organizations to provide students with diverse and impactful service opportunities in Milwaukee.

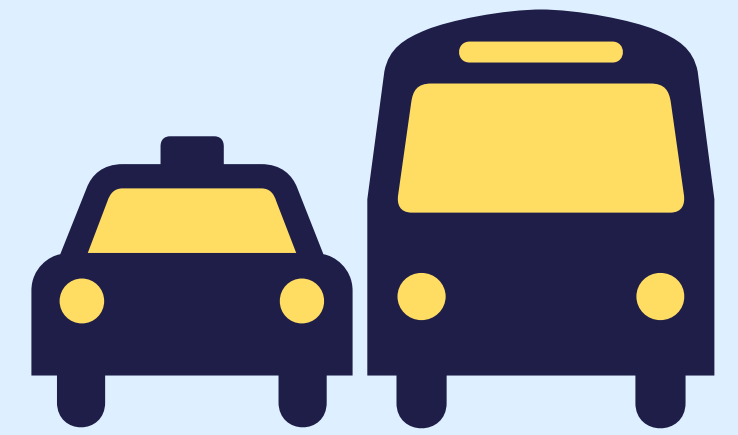
What is the purpose of service learning?

The primary focus of Marquette's Service Learning Program is the learning aspect. While the service provided should benefit the community agencies, the program prioritizes placing students in roles where they can directly experience, observe, and practice the concepts they are learning in the classroom. This approach ensures that students gain significant educational value from their service experiences to engage in activities that enrich their academic, professional, and personal growth.

What do you gain from service learning?

Academic Enhancement: Deepens understanding of course material by applying it in real-world contexts.
Skill Development: Builds critical skills such as leadership, teamwork, problem-solving, and communication.
Personal Growth: Encourages self-discovery and personal development.
Civic Engagement: Fosters a sense of social responsibility and commitment to community service.
Career Preparation: Provides practical experience and networking opportunities that are valuable for future career paths.

TRANSPORTATION



Marquette's Resources

- Make use of the **Umo Mobility app** to help schedule your bus routes.
- Reach out to the **Student Coordinators** if you need help **arranging carpools, setting up a bus buddy group, or walking group to your site.**
- You may use the **EagleExpress** but remember it **does not travel outside the normal routes or times** for service learning.

Personal Resources

- Students may use **rideshare apps like Lyft or Uber** if they are willing to spend their own money.
- Students may use various GPS systems to guide them to their service sites including **Google Maps, RIDE MCTS, Apple Maps, etc.**

Safety Resources

- Always be aware of your surroundings.
- Watch the **Service Learning Safety Video** prior to your site orientation at:
<http://www.marquette.edu/servicelearning/safety.shtml>
- **MUPD Non-Emergency**
414-288-6800
- **MUPD Emergency**
414-288-1911

OUR EXPECTATIONS

- Commit to **18-20 hours of service** over the semester (approximately 2-3 hours per week).
- Ensure your participation spans the **entire semester**, even if you fulfill your hours early.
- **Align your actions with course objectives**; seek guidance from your professor or site contact if you're struggling to make connections.
- **Uphold site expectations**, ensuring appropriate dress and completion of mandatory training or checks.



REFLECTION SESSIONS



- Students may be required to attend one reflection session throughout the semester.
 - *Reflection sessions allow students to make sense of their interactions with others, understand the broader context of service. These sessions provide a space to connect our thoughts, feelings, and practical experiences, fostering a deeper understanding of ourselves and our community.*

REFLECTION SESSION INFORMATION

MKE 1001: (In-Person)

- *Learn about Milwaukee's rich history and discover your role within the community through a documentary and discussion. This session aims to deepen your understanding of the city's strengths and challenges.*
 - Tuesday, September 24, 3-4:30pm, AMU 157
 - Thursday, September 26, 5-6:30pm, AMU 157

What Does Democracy Mean to Me?

- *Engage in a bipartisan conversation about the true meaning of democracy in today's world. We'll explore various perspectives on what elements of democracy are most crucial.*
 - Friday, October 4, 2:30-4pm, AMU 157
 - Monday, October 7, 3:30-5pm, AMU 157

If You Had a Magic Wand: How Would You Create Change in Milwaukee?

- *Discuss ways to address health inequities and improve community well-being based on Milwaukee Health Department priorities. This session will focus on identifying opportunities for creating a healthier city.*
 - Tuesday, October 29, 9-10:30am, AMU 157
 - Wednesday, October 30, 6-7:30pm, AMU 227

We Need to Talk About an Injustice

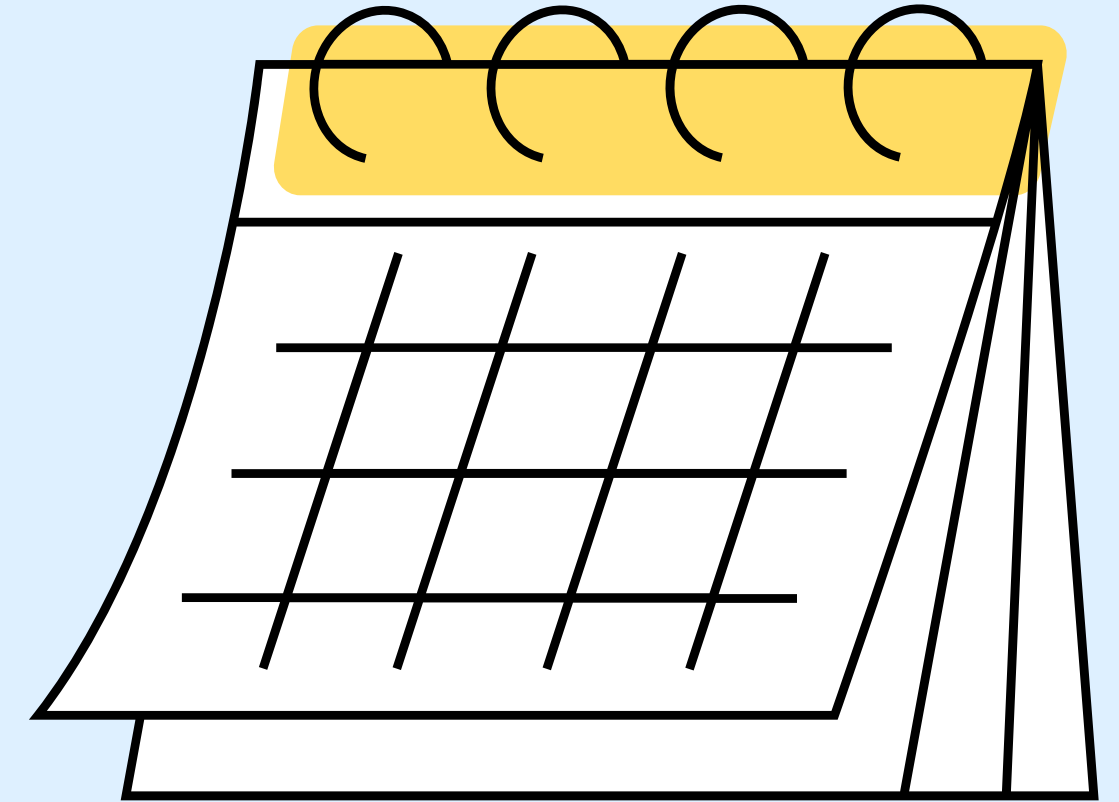
- *Watch Bryan Stevenson's TED talk on mass incarceration and its disproportionate impact on marginalized communities. We'll discuss how these issues affect Milwaukee and explore ways to advocate for justice.*
 - Wednesday, November 6, 4-5:30pm, VIRTUAL
 - Sunday, November 10, 2:30-4pm, VIRTUAL

Recombobulation: Making Sense of our Disorientation

- *Inspired by Milwaukee's famous Recombobulation Area at the airport, this session helps you reflect on your service learning experience and regroup after the semester's challenges. We'll process the new perspectives you've gained and how they've impacted your journey.*
 - Monday, November 18, 2:30-4pm, AMU 157
 - Friday, November 22, 3-4:30pm, AMU 157
 - Wednesday, December 4, 5:30-7pm, AMU 157

IMPORTANT DATES

- Registration opens September **4th at 12pm** and ends September **11th at 5pm**.
- Safe Environment Trainings are **September 6th at 9am to 12pm** or **September 13th at 12pm to 3pm**. Both opportunities will be in the Lunda Room in the AMU.
- Late registrations will need to meet with the Director or Assistant Director for placement. After **SEPTEMBER 27th**, we will no longer be placing students.



LOGGING HOURS

- Log your impacts after each visit to your site.
- Make sure you log your impacts to ALL the correct places.
Ex: You logged at your site & logged under your template on MUEngage.
- **Hours will be verified twice** during the semester-
during midterms and finals. Ensure your hours are updated regularly, so your professors get an accurate report.
- If you have multiple classes, **share your impacts with all of your classes** that require service learning.



INDEPENDENT VOLUNTEER AND CURRENT VOLUNTEER FORMS

Independent Placement Form

- Students wishing to complete service learning at a organization that does not partner with the Service Learning Program.

Key Points

- Check the Current Community Partner list to see if your organization partners with the Service Learning
- Submit the form to our office in order to log your hours for credit and submit a signed timesheet for verification.
 - Both logging hours in MUEngage and submitting a timesheet are mandatory to receive credit.
 - Timesheets must be submitted by the last week of classes.
- Professor must sign off on the form before it can be processed by our office
- Email the form to servicelearning@marquette.edu or turn it in in person at the 707 Building, Suite 303.

Current Volunteer Form

- Students choosing to volunteer/continue volunteering at an organization that is partnered with the Service Learning Program

Key Points

- Professor must sign off on the form before it can be processed by our office.
- Email the form to servicelearning@marquette.edu or turn it in in person at the 707 Building, Suite 303.

BEST PRACTICES FOR STUDENTS




**CHECKING
EMAILS
DAILY**



**BUILDING
RELATIONSHIPS**



**LIMITING
PHONE
USAGE**



**MAINTAINING A
POSITIVE
ATTITUDE**



**COMMUNICATING
EFFECTIVELY**



**COLLABORATING
WITH COMMUNITY
PARTNERS**



**NOT ADOPTING A
SAVIOR MENTALITY**



**DEMONSTRATING
COMMITMENT AND
ENGAGEMENT**

STILL CONFUSED?

- Watch the instructional video on MUEngage on the Service Learning Website.
- Reach out to the Service Learning staff with any questions as soon as possible



NEED MORE INFO?

Instagram:

- @mu.servicelearning

General Email:

- servicelearning@marquette.edu

Phone Numbers:

- 414-288-3262
- 414-288-3264

Staff Contact Information:

- <https://www.marquette.edu/service-learning/about-us.php>

